



*If you are considering  
a cottage...*

*or a castle...*



Welcome to the premier estimating system for  
Lumber Dealers, Professional Builders & everyone working in the Construction Industry.

Create detailed, itemized quotes **without a digitizer!**



Visual  
LumberPro<sub>4.0</sub>

A Product of Atlantic Quote Systems, Inc.

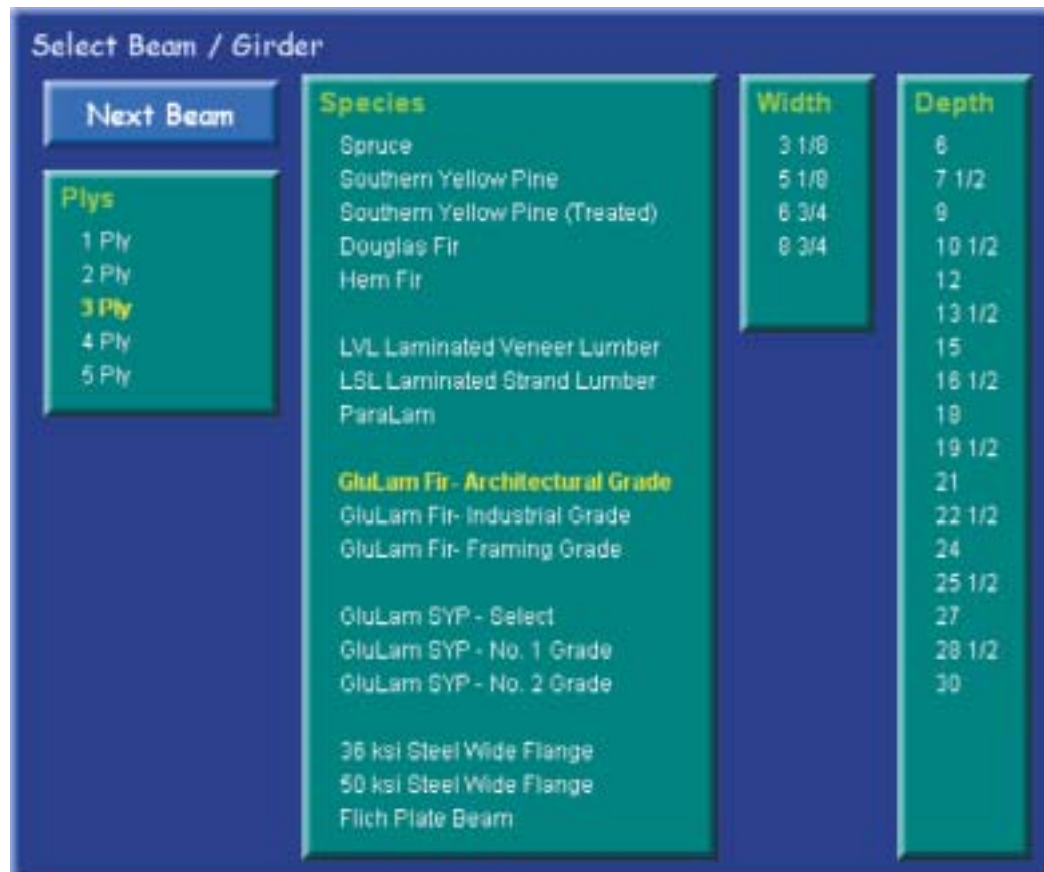
[www.aqsi.net](http://www.aqsi.net)



*...Or anything  
in-between...*



*"A single set of building plans could have a virtually unlimited number of valid estimates ...so in estimating...  
It's all about choices."*



*This illustration shows how simply clicking on the choices will quickly customize the beams to support each level of the house.*

*...the "Next Beam" button allows up to 99 different beams under each floor.*

*Beams can be selected on four different screens, allowing you to list beams separately for four different floors of the house.*

Visual LumberPro redefines the entire quote process. Not just a simple lumber take-off, **Visual Lumber Pro** provides a method of matching the breadth of your entire product offering to the needs, preferences and desires of the individual contractor or owner. Sales success is often determined by the skills of the people responsible for this matching process.

In fact, a large part of the financial success of the building materials business is based on individual professional knowledge, attention and assistance that those involved in contractor sales bring to this procedure. Visual LumberPro is an important new tool for these sales professionals.

Visual LumberPro is designed from the ground up to help you make product choices. You can easily satisfy the preferences of each individual contractor that you serve.

*Atlantic Quoting Systems, Inc. wishes to thank Owens Corning for the images of their roofing materials for use in this user guide.*



## What products do you carry at your lumberyard ?

*Conventional wisdom says that a lumber estimate is a list of parts to build a structure!*

So estimating is the process of "taking-off" or making a list of quantities of various materials from a blueprint. But let's think about what you carry at your lumberyard. Focus on tongue and groove panel products intended for use as sub-flooring. Do you stock one product? Of course not! You probably stock at least 3; maybe more. You have some form of plywood, an OSB product and perhaps a premium panel product... designed to take the bad weather during construction.

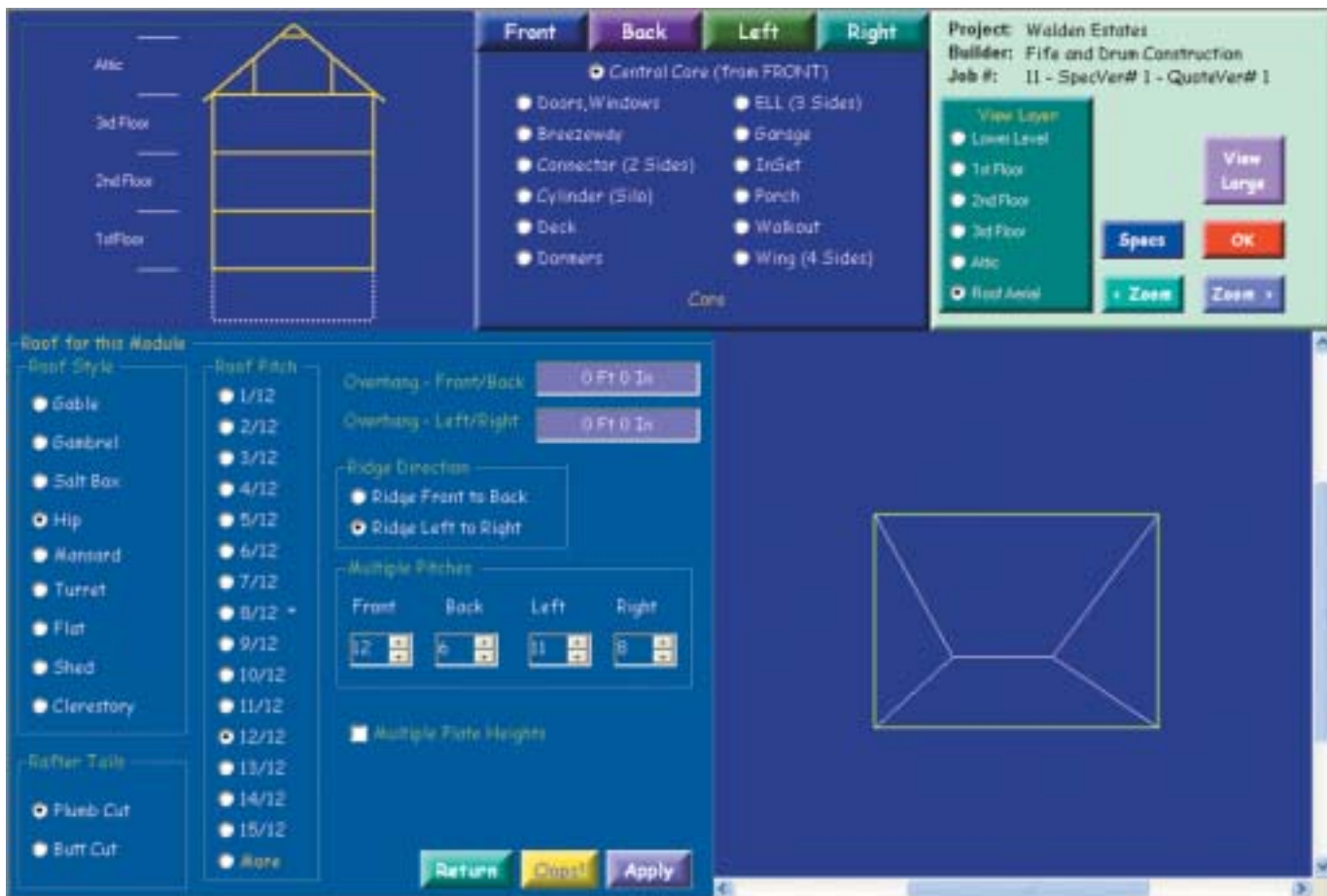


Now multiply these offerings by several species, thicknesses and grade levels. In total you probably have somewhere between 10,000 to 30,000 different products, with a wide variety of choices for every building need.

Indeed, a quote is a lot more than just extracting measurements and estimating the quantities required. A lumber estimate is heavily involved with matching the right product...with the right customer. But, who could possibly remember 10,000 items? **Visual LumberPro** remembers every one and presents the right set of choices at precisely the right time.

Read more to see how **Visual LumberPro** helps make this process easy and natural. It really is... **"all about choices"**.

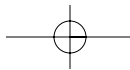
## *“What makes it Visual?”*



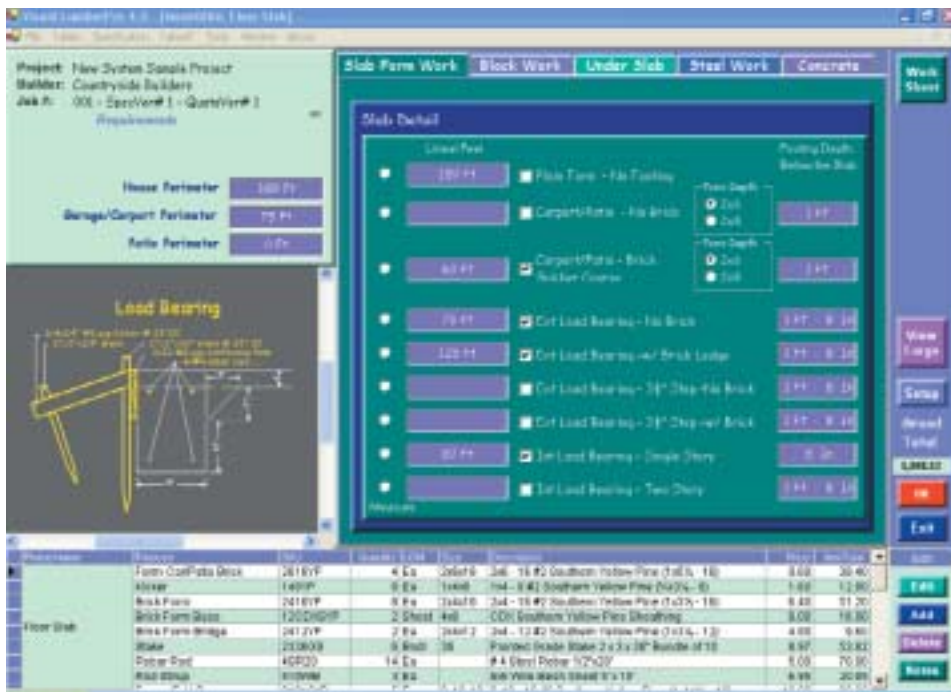
Many estimators, when using manual methods, begin by dividing a building into 'blocks'. In fact, this is the preferred method when using LumberPro. Next, you enter the dimensions for each block. Then, click on roof pitches. Your 'drawing assistant' inside LumberPro does all the drawing for you. When the next block is entered **Visual LumberPro** automatically blends the roof between the old module and the new. No drawing skills are required.

Each time you add the dimensions for a new block... **Visual LumberPro** draws it for you. **You can quickly erase your dimensions and make adjustments as you go.** When you make roof selections, all you need to do is enter roof pitches and styles as taken from the blueprint. LumberPro creates a 'down view' roof diagram showing all eaves, ridge, hip and valley lines.

This visual sketch helps confirm that your interpretation of the blueprint is correct. So, LumberPro is visual because it helps you 'see' a sketch of the building that you have just entered. You will have peace of mind knowing that the dimensions entered make sense because you already have a visual image. Keep in mind that all of the drawing is done by **Visual LumberPro's** 'drawing assistant' using only your mouse and keyboard entries... **No digitizer is required.**



## “What makes it Visual?”

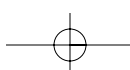
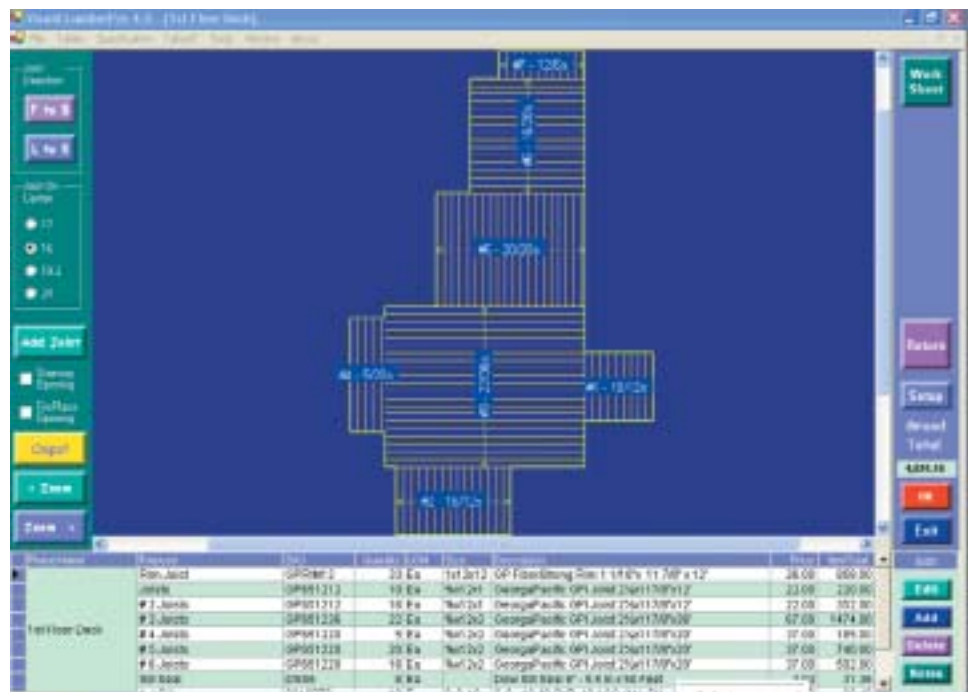


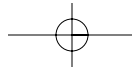
This visual ability will also help confirm that you have made the right selection on ‘take-off’ screens.

For example, the small illustration for Monolithic Concrete Slab forms (shown here) will provide confidence you that you have made the right choice for forming detail

Floor joists are added by simply dragging a ‘rubberband’ over the area where joists are to be placed. Releasing the mouse button adds the joists, both to the sketch and to the estimate itself.

‘Rubberband’ is a word used to describe the act of clicking at one cursor location and dragging diagonally to a new location. It produces a temporary dotted line (‘rubberband’) that outlines the area for an intended action.

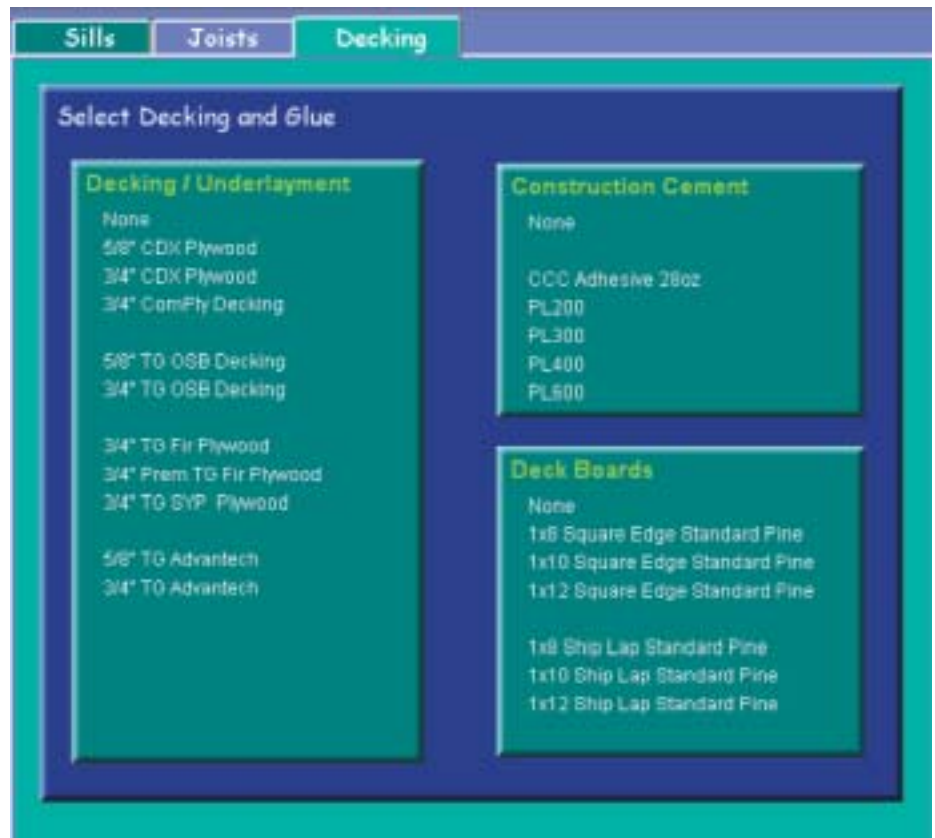




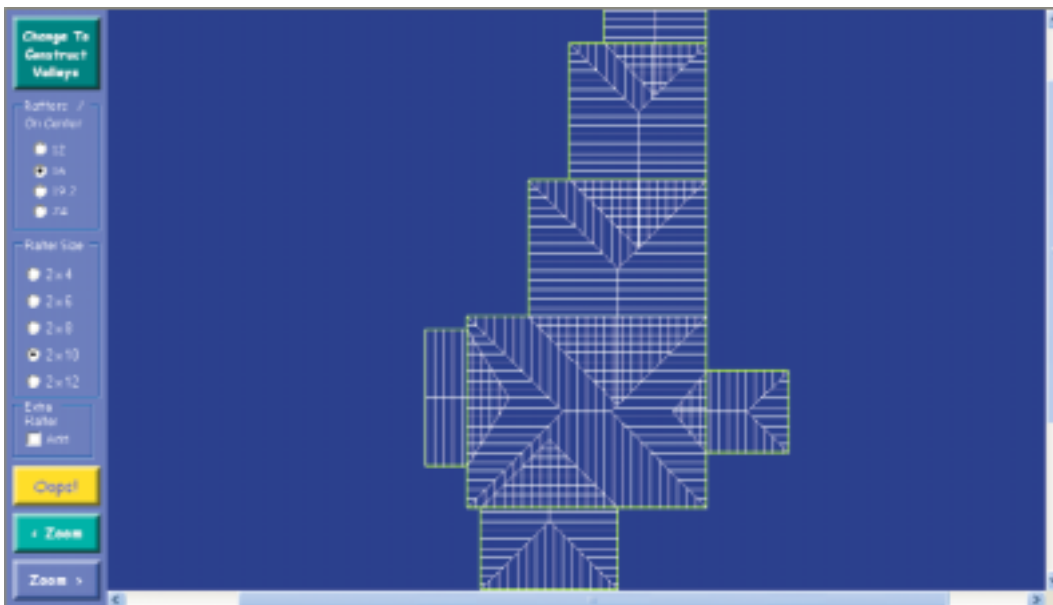
## *A roof in less than 60 seconds!*

The drawing system in Visual LumberPro was custom designed solely for the construction business. Instead of just drawing lines, this is a drawing system that 'thinks' in terms of joists, rafters, hips and valleys.

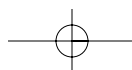
Using this new tool, you will be able to complete the roof choices for a roof like the one in the illustration below in less than 60 seconds!



*Nearly every screen has special ways to help make choices, because... in estimating... "it's all about choices." These choice selectors are easy and intuitive to use. They often 'blink' to show you the next step.*



*Illustrations: 8-1/2 x 11 in. illustrations of floor joist layouts, beam locations and roof systems can be printed. These diagrams are referenced to the proper lines in the quote and can accompany the estimate to provide a guide as to how these vital calculations were determined.*



## It's easy to use!

Every computer software application starts with a vision...the vision for LumberPro comes from the perspective of a general contractor with experience in handling the realities of the home building trade. The design of the screens, which form the interface between you and the software program, is based on the same procedures that you may already use in a manual takeoff process. If you are an experienced user of PC computing systems...or using a computer for the first time...you should not have to change the way you think to enjoy the benefits of Visual LumberPro. You will quickly recognize some of the step-by-step methods you already use to produce a lumber list from a set of blueprints.

Quote - Ajax Lumber and Building Supply Co., Inc.

### Who will this be for ?

Customer Name: Samuel Clemens  
 Company: Countrywide Builders  
 Address: 504 West Hudson Street  
 City, State, Zip: Elmira, NY 99999

### Where will this be built?

Don't know - this is just a list - skip the specification  
 Same address as above  
 Owner Project Job Number: C001-28

Job Name: Pilot House  
 Job (Address) Location: 100 Sullivan Hill Road  
 City: Elmira  
 State: NY Zip: 99999-9999  
 Driver Directions: Route 17 East, 3 Miles, Left on Sullivan Hill Rd, top of hill, octagon foundation.  
 Sequential Quote Number: 27

Buttons: Add New Customer, Find, Done, Save-OK, Exit

You will notice that many Visual LumberPro screens look different than other software that you use! That's because each of the visual presentation tools were custom designed for use in this visual estimating application

Select entries for Central CORE of the house  
 Enter dimensions as viewed from the FRONT

Select Style:  
 One Story  
 Raised Ranch  
 Cape  
 Cape and 1/2  
 2-3 Story  
 Garrison  
 Gambrel(Ma)  
 Clerestory  
 Salt Box  
 Shed (Flat)

Foundation:  
 Concrete Slab  
 Crawl Space  
 Pier/Piling  
 Full basement

Check # of Floors:  
 Attic Room  
 3rd Floor  
 2nd Floor  
 1st Floor  
 Finished Lower Level

First Floor:  
 Width: 36 Ft - 2 In  
 Depth: 20 Ft - 4 In  
 Beam where Parts Join

Second Floor:  
 Width: 36 Ft - 2 In  
 Depth: 20 Ft - 4 In  
 Beam where parts Join

Buttons: Add Another, Delete, Roof, Oops!, Apply

One of the most common tools a programmer uses is a text box (a place for you to type something). Even the commonplace text box is different in Visual LumberPro. Type a number in our custom text boxes and it will be immediately converted to feet, inches and fractions! All you need is a dash between the measurements.

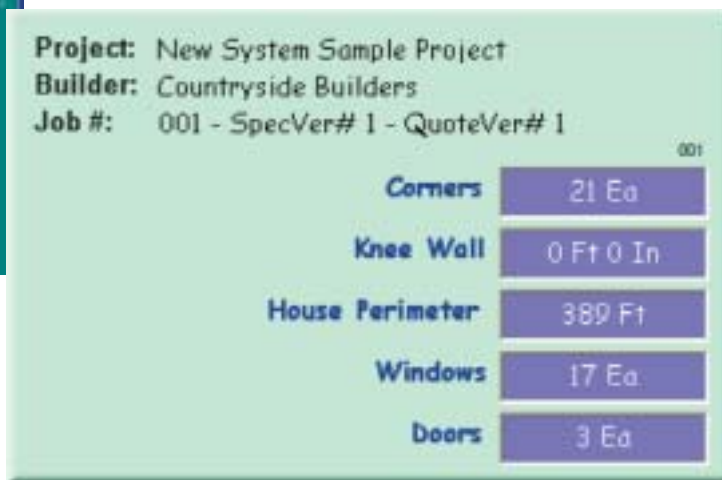


# It's as simple as 1-2-3



**1** Enter the dimensions for each block.

*Measurement Assistant*



**2** LumberPro's 'measurement assistant' finds the critical values appropriate for each individual 'take-off' screen.



You can manually override any measurement in the 'measurement assistant' window just by entering your adjusted value.

**3** Make 'take-off' selections – the values in the 'measurement assistant' window will be used along with your new selections to determine final quantities for the quote.

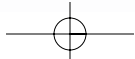
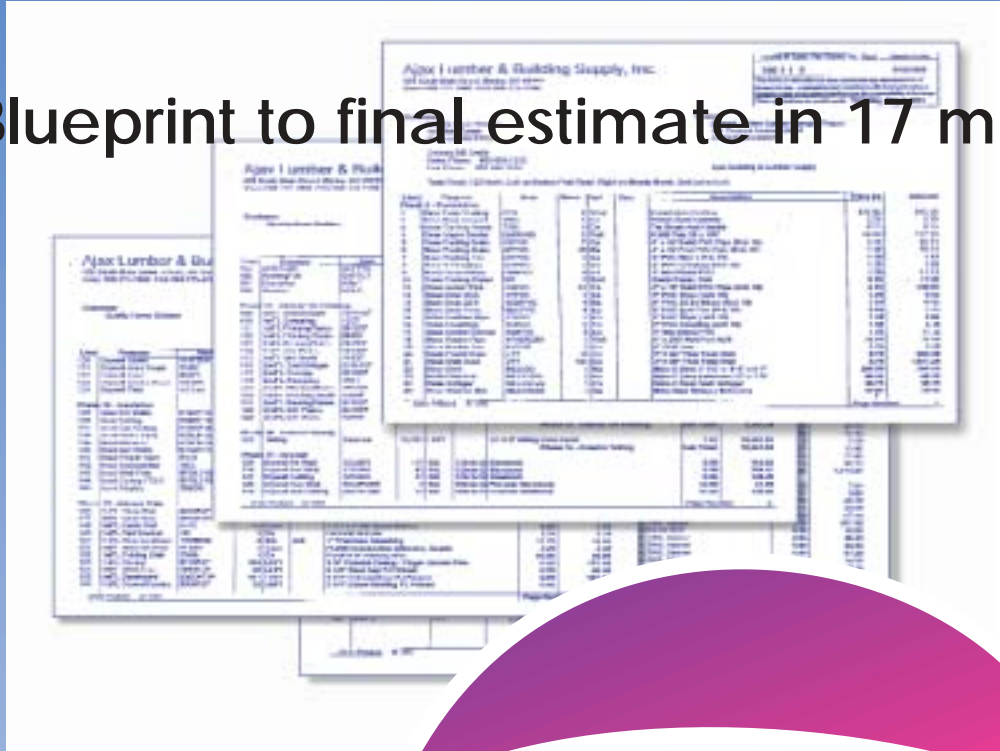




All you need is a PC and a mouse.  
No digitizer required!



From Blueprint to final estimate in 17 minutes!



## So . . . You already have an Estimating System!

### Is it easy to use?

It's surprising how many times we hear (regardless of the brand purchased, even including our original LumberPro)... "Well, it's OK for simple rectangular buildings but frankly I get lost trying to do today's complex structures".

This is a problem in the entire estimating software industry. Our trade is characterized by computer systems designed by software experts, often with little understanding of the real needs of construction trades. This, coupled with a limited set of tools for software developers available from Microsoft® and other resources, has led to cookie-cutter solutions. The results look more like a standard spread sheet or a database set of tools rather than a system designed for estimating.

Visual LumberPro was designed by thinking outside of the normal confines of available Microsoft® tools. You will notice that many of the presentation aids on the Visual LumberPro screen look different! That's because they were custom designed for use in this visual estimating application. You will find that the visual experience in LumberPro will make it easy to handle complex choices.

### Assemblies

Traditional estimating systems have been largely based on some form of assembly (sometimes called a building scenario). This assembly concept is fast because groups of products, like a front wall assembly, can be inserted in the estimate very quickly. But the trade off for this speed is a 'cookie-cutter' approach to dealing with your customers. Sales needs are far better served when the estimate is customized for each customer's requirements.

Assemblies may be changed and, of course, several assemblies for the same function could exist. However, the assembly approach ignores the fact that a product offering of 10,000 to 30,000 different items will result in an infinite number of combinations.

Visual LumberPro 4.0 brings a whole new innovative computer software design to the process of measuring a drawing. Clever new methods help establish the quantity, size or length of each building component. Once the requirements for the structure are established, LumberPro uses its newly designed product selectors to allow the user to quickly and easily make choices from ALL of the available products.

Three years in development, these new techniques are extremely fast and intuitive. Comparisons of one product to another can be made on the spot to help in making the otherwise bewildering array of choices.

*The owner of a lumberyard in the Midwest said, "I spent a great deal of money on the computer estimating system that I now own, but am not using...because I've never come to trust the results."*

**V**isual LumberPro is designed as an interactive tool. That means you can make adjustments as you go. The result of your last action is shown at the bottom of the screen...no waiting till the end to see results. If you would like to change anything you can do so as you go. Maybe you would just like to add a note below the last selection to tell the customer "this reflects your verbal request for the dining room chair rail".

#### **In Visual LumberPro you can change anything on the fly.**

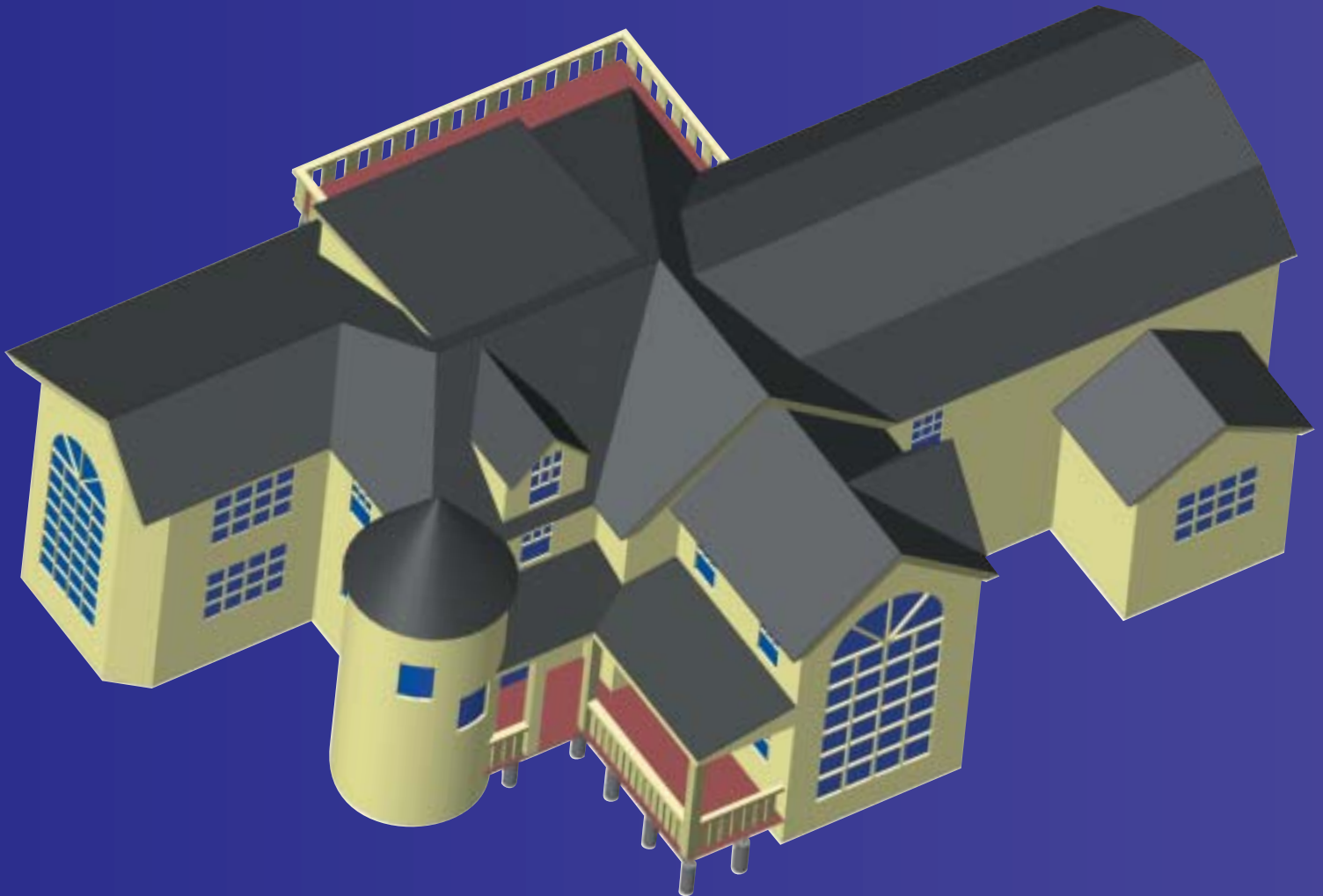
You can change the building structure itself. If you have already started your work and suddenly see a detail that you failed to record earlier...go ahead...you can change it. The system's 'measurement assistant' takes dimensions from the structure, but you can change them. Next, product selections are fulfilled based on these measurements...again, you can change even these results if you wish. All at a speed that is...well, just hard to believe until you try it yourself.

You will be able to trust the results because you are a participant every step of the way - you have not given your authority and wisdom to a computer list or a pre-built assembly. Because this is done in software your estimate can contain an unprecedented level of detail; more detail than anyone would be willing to write by hand.

One reason **Visual LumberPro** is so fast is that you can mark many selections as 'presets' without limiting your ability to make alternate selections. In short, common selections often don't even require a click of the mouse. The best part is that all of the alternates are visually displayed at one time so making a rarely used choice is always just one click away.

With elaborate detail and innovative new techniques, **Visual LumberPro** is designed to instill in both the estimator and the customer a feeling of trust in the results.

## *House as shown in Blueprint*



A complex structure is easy to work with in **Visual LumberPro**... just divide the building into blocks.

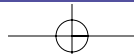
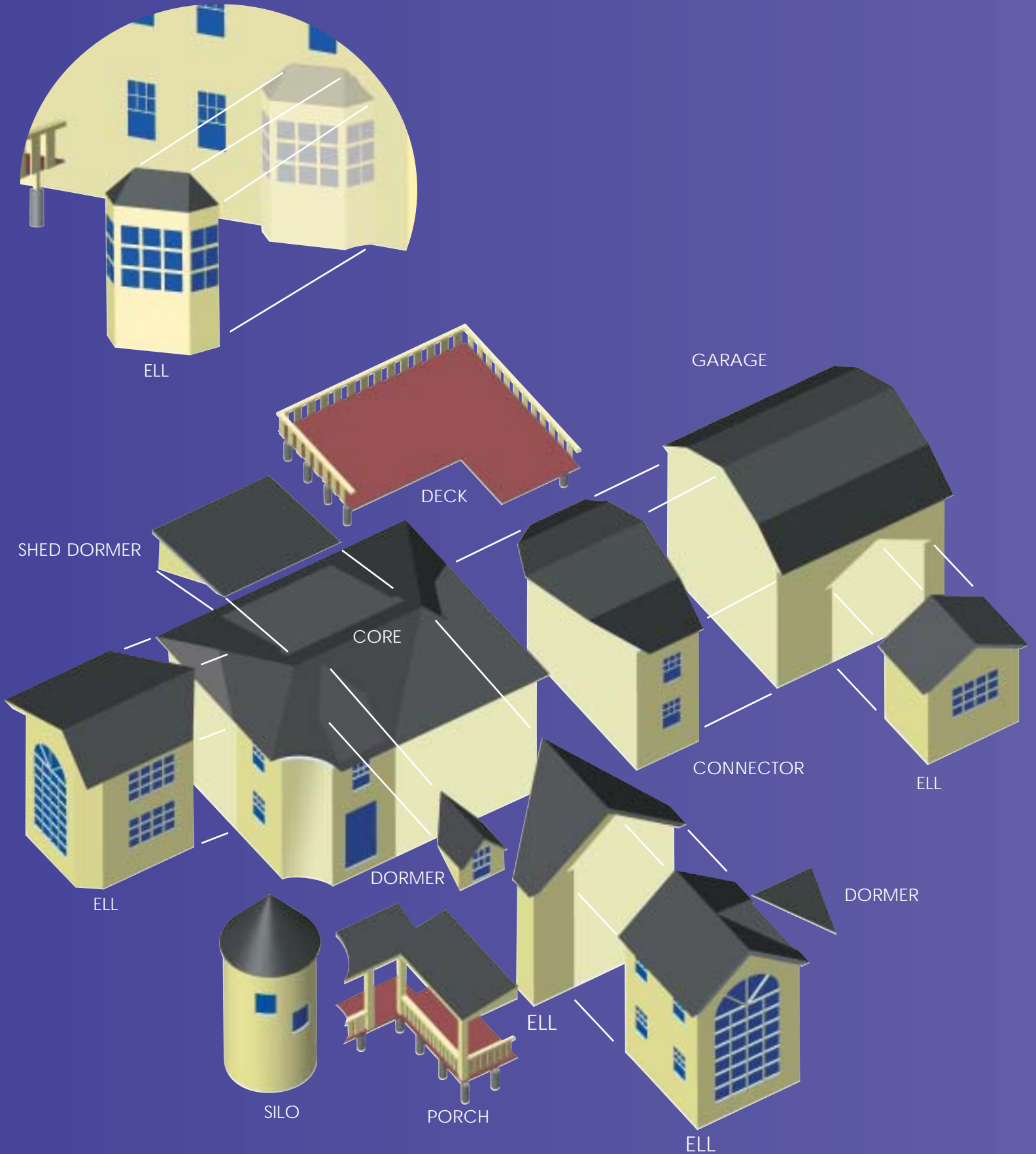
Enter the width and depth for the block. Click on selections for number of floors for the block. Select a roof style and pitch.

Each time you add a block, **Visual Lumber Pro**'s 'drawing assistant' adds the new block to the sketch and shows you how the roof blends with the prior block.

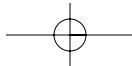
You can make adjustments as needed.



# *It's easy to divide a building into blocks!*

















## *What hardware and software do I need?*

### **Visual LumberPro 4.0 is written in the latest version of Microsoft's® Visual Studio.Net.**



(So it runs best in Microsoft XP; if you have a small network, choose Microsoft XP Pro)

-  It will run best on one of the newer fairly fast PC's. (Newer laptops are fine as well, but make sure the display is 1024 x 768 – extra bright displays are good. Consider a numeric keypad and be sure to buy a mouse.)
-  LumberPro uses a lot of RAM memory; it will work on 256Meg, but you will be happier with 512Meg. Faster is better.
-  It needs a 1024 x 768 display driver.
-  There are lots of detailed diagrams to display – you will be happier with a 19" screen.
-  Make sure you have a good way to back-up your work – a writable CD is a must.
-  You will be printing a lot on Visual LumberPro. A black and white laser printer will give you better quality at a lower cost for the many copies. Joist layouts and rafter layouts will be easier to read in the field.
-  Make sure that your computer can connect to the internet. (The PC needs a modem or other network access such as a NIC.) A planned ability of LumberPro will automatically check the internet for updates and new features so you will want to be connected. It is written for the internet so things like file transfers will be easy to do.

### **POS (Point of Sale) System Interface**

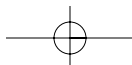
-  Visual LumberPro will accept inventory files and customer lists from virtually any POS system. We use a simple SKU matching technique to decide on which items to import. All we need is the text file on a daily or weekly basis to keep prices up-to-date.
-  We produce text files as an additional output for every quote. When a quote is accepted, it may be presented in electronic format to the POS. Check your POS vendor to determine if they have the ability to accept 'uploaded' files.
-  Since Visual LumberPro is written in an advanced language that is very comfortable on the internet, we stand ready to produce XML interfaces with equally advanced POS systems.

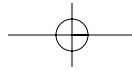
### **Visual LumberPro 4.0 is for use on one computer.**

-  You will need to purchase a copy for each user (multiple unit pricing is available). The program requires the security key shown at right for each computer.
-  The installation CD may be used to install the software on several machines (for example, one at home if you wish). This will help when you occasionally need to take a plan home to meet a deadline. Just remove the key from your PC at work and temporarily put it on your home computer.



You can choose a security key for either a parallel port or the newer USB bus.





## *Visual LumberPro will help make choices out of all these building materials*

### Site

Grade Stakes, Marking Paint  
Layout Twine, Survey Ribbon  
Drainage Culvert ADS & Steel  
Culvert Coupling  
Septic Tank Poly – Steel – Concrete  
Tank Gasket  
Septic Distribution Box  
Leach Bed Chambers  
Leach Bed Pipe  
Drywell and Cover  
Conduit for Electrical Service  
Conduit for Cable TV, Phone  
Conduit for Post Light  
Fuel Oil or Propane Tank

### Footing

Anti-Silt Cover  
Footing Drain Parts  
Gutter Drain Parts  
Radon Mitigation Parts  
Floor Sump  
Certainteed Form-a-Drain Parts  
Rebar Rods  
Footing Dowels  
Rod Ties  
Rebar Chairs  
Footing Concrete

### Floor Slab

Forms work for:  
Plain Slabs  
Car / Patio Slabs  
Bearing Walls  
Brick Ledge  
Stepped Forms  
Including:  
Form Boards  
Stake  
Kicker  
Rebar Rod  
Rod Ties  
Rod Chairs  
Rod Stirrup  
Brick Ledge Block  
Footing Block  
Mortar  
Mortar Sand  
Slab Vapor Barrier  
Under Slab Insulation  
Fill Sand  
Concrete

### Foundation Access

Concrete Bulkhead Areaway  
Bilco Bulkhead Door  
Gordon Bulkhead Door  
Bilco Scapewel and cover  
Bulkhead Stringer Steel and Wood  
Bulkhead Treads  
Steel Window Well  
Well Cover  
ICF Foundation  
Coming Soon

### Foundation – General

Damproffing & Moisture Control  
Tar Brush & Handle  
Tar Roller and Handle  
Tar  
Foundation Tie Tar Patch  
Foundation Wall Insulation  
Foundation Vapor Barrier Poly  
Foundation Door

### Block Foundation (CMU)

Wall Block  
Wall Steel Reinforcing  
Crawl Space Access Door  
Crawl Space Access Panel, Hasp, Hinge  
and Door Buck  
Crawl Space Vent  
Wall Windows  
Mortar  
Mortar Sand  
Parget Material  
Mortar Sand

### Pier Foundation

Inside Pier Block  
Outside Pier Block  
Curtain Wall  
Ground Cover  
Mortar Sand  
Mortar

### Piling Foundation

Piling  
Temporary Bracing  
Girder  
Porch Girder  
X Brace  
Bolts , Nuts & Washers  
Tie Down Strap  
Tie Down Lag Bolt  
Piling Walk Boards  
Piling Nails  
Trash Bin

### Concrete Foundation Coming Soon

### PWF Foundation

Foundation Studs  
Plate  
Top Plate  
Bearing Top Plate  
Sheathing  
Caulk  
Preservative  
Footer Pins  
Top Hanger  
Full Foundation & Floor Insulation  
Shear Wall Sheathing  
Corner & Stair Bolts, Nuts, & Washers  
Stair L Hanger  
Screed Board  
Grade Board  
Poly for Water Barrier & Garage Floor  
Retainer & Spacer

Crawl Space Vent  
Concrete Load Pad  
Footer  
Rebar Dowels  
Interior Wall Studs  
Shear Lateral Brace  
Solid Header & Spacer  
Anchor Bolts  
Floor Mesh  
Lateral Brace  
Top Filler

### Posts & Beams 1st, 2nd & 3rd Floors

Lally Columns  
Steel Posts  
Tel-O-Posts  
Sawn Lumber Beams  
LVL, LSL & ParaLam Beams  
GluLam Beams  
Steel Beams  
Flitch Plate Beams

### Decks 1st, 2nd, 3rd, & 4th Floors

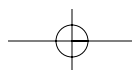
Sill Seal  
Case Hardened Nails  
Termite Shield  
Slate, Wood & Mineral Shims  
1st & 2nd Sills  
Floor System  
Conventional Sawn Joists  
I Joists  
Open Web Floor Truss  
Joist Hangers  
Plywood / OSB Floor Decking  
Construction Glue  
Bridging  
Wood  
Metal  
Floor Strongbacks

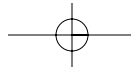
### Exterior Walls - Walkout, 1st, 2nd, 3rd Dormer Levels, and Garage Walls

Wall Plates  
PT  
Exterior Studs  
(Exterior studs may be sized differently  
than interior studs)  
Exterior Wall  
Includes: Studs, Jacks, Headers Cripples,  
Corners, all by actual count Knee Wall  
Studs, find best length, Jacks, Trimmers,  
and Kings are selectable. Corners are  
selectable  
Temporary Bracing (Spring Boards)  
Blind Corner Insulation  
Sheathing  
Insulation Board  
Wind Bracing  
House Wrap  
House Wrap Sealing Tape  
Gable Studs  
Gable Sheathing

### Roof

Roof Rafters  
Stock & Custom Trusses  
Hip Rafters





Valley Rafters  
Roof Ridge Board  
Roof Decking  
Roof Decking Clips  
Hurricane Ties

#### Roof Trim and Roofing

Ice & Water Shield  
Roofing Felt  
Drip Edge & Starter  
Gutter Apron & Roof Edge  
Gravel Stop  
Ridge Vent & Roof Louvers  
Gable Louvers  
Powered Vent  
Roofing Shingles  
3 Brands – 3 Tab & Arch  
Roofing Starter Roll or Shingles  
Hip & Ridge Caps  
Cedar Breather  
Cedar Shingles & Ridge Cap

#### Breezeway

Breezeway Girders  
Breezeway Ceiling  
Breezeway Girder Trim

#### Exterior Siding & Trim

Gable Rake Trim  
Gable Shadow Trim (Drip Extension)  
Fascia  
Fascia Shadow (Drip Extension)  
Corner Boards  
Two Part Soffit  
Vented Soffit Stock  
Vinyl & Aluminum Soffit  
Gable Soffit  
Garrison Soffit  
Frieze Board  
Skirt Board  
Soffit Vent  
Wood Siding  
Vinyl Siding & Accessories  
Wall Shingles  
Fiber Cement Siding  
Crown Molding  
Bed Molding  
Dentil Molding  
Trim Coil Stock  
Pre-Bent Trim  
Interior Partitions

Interior Studs & Jacks  
Interior Plates  
Plumbing Wall Studs & Plates  
Knee Walls

Stair Stringers  
Stair Platforms  
Stringer Spacers  
Temp & Utility Treads  
Temp & Utility Risers  
Ceiling Strapping  
Ceiling Joists or Overlay  
Ceiling Strongbacks

#### Insulation

Wall Insulation Batts & Rolls  
Ceiling Insulation Batts & Rolls  
Blown Insulation  
Mid Floor Blockers  
Garage Common Wall Insulation  
Garage Insulation  
Under Floor Insulation  
Proper Vent for Roof Areas  
Insulation Staples  
Floor Wires  
Poly Vapor Barrier

#### Drywall

Drywall for Walls & Ceilings  
Garage & Exterior Firecode  
Drywall Screws  
Joint Compound  
Tape  
Corner Bead & Trim

#### Interior Trim

Baseboard  
Door and Window Casing  
Stool Cap  
Chair Rail  
Cornice & Crown Molding  
Shoe Molding  
Carpet Strip  
Door Jamb Stock  
Plinth Block  
Rosette  
Closet Shelves & Shelf Cleats  
Closet Shelf Steel Supports  
Closet Rods  
Closet Rod Brackets  
Utility Hand Rails  
Folding Stairs  
Folding Stair Insulation

#### Garage

Sill Seal  
Case Hardened Nails  
Termite Shield  
1st and 2nd Sills

Lally Columns  
Girders  
Conventional & LVL  
Ceiling Joists  
Conventional & 'I' Joist  
Joist Hangers  
Plywood & OSB Floor Decking  
Construction Glue  
Slab Fill Sand  
Anchor Bolt  
Garage/Carport Steel  
Fiber for Concrete  
Concrete

#### Porch and Deck

Sono Tubes  
Big Foot  
Concrete Mix  
Below Deck Posts  
Post Base and Caps  
Porch Girder Stock  
Ledger and Ledger Board Screws  
Floor Joists and Rim Joists  
Joist Wrapper Trim  
Joist Hangers  
Decking Stock Wood and Plastic  
Stair Stringer and Stair Treads  
Newell Posts and Caps  
Porch Posts  
Hand Rails Top & Bottom & Caps  
Balusters  
Lattice  
Stainless Steel Fasteners  
Eb-Ty Biscuits  
DeckMaster  
Maine Deck Fastener

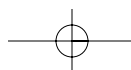
#### Nails

Both Regular & Gun Nails  
Box Nails  
Casing Nails  
Common Nails  
Deck Nails  
Drywall Nails & Screws  
Duplex Nails  
Fence Staples  
Finish Nails  
Gutter Spikes  
Hanger Nails  
Hardened Nails  
Pole Barn Nails  
Plastic Cap Nails  
Roofing Nails  
Siding Nails  
Underlayment Nails

### Enhance **LumberPro** with Visual Windows Option

This fully integrated option works seamlessly within **LumberPro**. The Windows Option allows the selection of the popular windows from two or more manufacturers. Choose windows either from your list of favorites, or by dimension, or by model number.

Ask for more information today.



# Experience

At Atlantic Quote Systems we have designed estimating systems for 10 years. The LumberPro system of estimating is now used by over 600 lumberyards. We have enjoyed superb customer feedback and have received valuable suggestions for improvements.

While LumberPro was designed and built using first-hand experience from the general contracting business, our most valuable source of new ideas has come from the people who now use our software every day. This newest product, Visual LumberPro 4.0 is an expression of the wants, needs and suggestions of these loyal users.



## Some examples of ideas that originated from our users are:

The job phases can now be put in an order prescribed by the user. This allows the user to more accurately reflect the order of building sequence and customize it to local practices. The order of tasks within a particular phase of construction can also be determined by the user. The object is to make both the process of creating a list, and the printed list itself, more friendly to the people who will actually use it.

Lumber lengths can be randomized, optimized, selected from a list using virtually any set of rules for lumber lengths. Lineal components like LVL, often sold by the foot, now are shown as a 'cut list' for use in setting up the load at the lumberyard. Headers can also be shown as a 'cut list' in markets where precut headers are sold.

Hurricane ties, seismic tie downs as well as new features for slab, pier and piling foundation homes have all been greatly expanded to meet local requirements. We

now serve building supply dealers offering a broad spectrum of building products such as concrete block and ready-mix concrete in addition to lumber. You will find choices in Visual LumberPro that are suited to a much broader range of needs.



We are clearly committed to listening to our customers' needs and incorporating suggestions that will benefit users throughout our industry. We encourage suggestions and pledge that we will continue to enhance Visual LumberPro to meet our customers' requirements. It is our goal to be rated "Best-in-it's-Class" by the lumber dealers and contractors who use our software tools.



A Product of Atlantic Quote Systems, Inc.

16 North River Road, Milford, NH 03055 (603) 673-3999  
©1996-2004 Atlantic Quote Systems All rights reserved  
[www.aqsi.net](http://www.aqsi.net)

*Atlantic Quoting Systems, Inc.  
wishes to thank Elk Roofing for the  
images of their roofing materials  
for use in this user guide.*